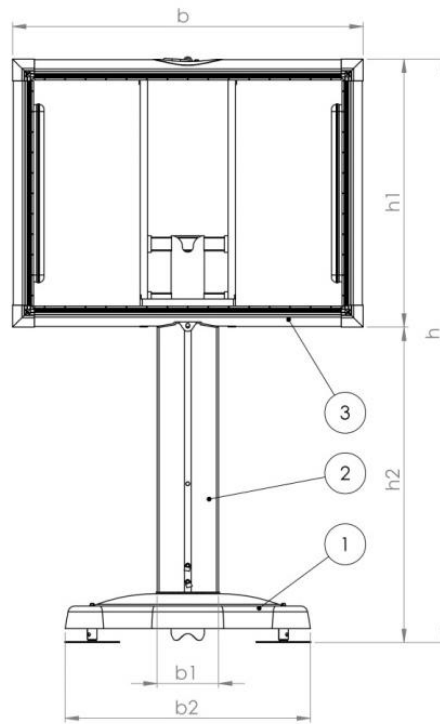


Technical specification Trotter A3-LED

Structure Geometry;

Type	A
Width (b)	3622 mm
Width (b1)	450 mm
Width (b2)	2205 mm
Height (h)	4600 mm
Height (h1)	2572 mm
Height (h2)	2312 mm
Weight frame	580 kg
Weight foot	2000 kg
Feed Pitch	1736 mm
Stroke Feed	150 mm
Max Wind load	28 m/s
Beaufort	10

Print area	8 m ²
Length	3410 mm
Width	2350 mm



Lighting specification;

Armature	2x2 58Watt & 4x2 36Watt Totaal 505Watt
Power	230V ~ 50Hz / 240V ~ 60Hz
Ballast	Electronic Balance
Type TL	F58W/965-T-8 Philips F36W/965-T-8 Philips
Joining	CEE plug (blue, 230V)
Power cord	5m, 3x1,5mm ²
IP Rating	IP65
Colour Temperature	6500 °K
Lighting Efficiency	78LM/W

LED specification;

Power	230V ~ 50Hz / 240V ~ 60Hz - 16Amp
Power Consumption	650Watt/m ² (210Watt/m ² Average)
Leakage current	30mA
Pixel pitch	4.81mm
Pixel density	23.328 pixels/m ²
Pixel configuration	1R1G1B
Panel size (L*H)	300 * 200 cm
Brightness	5.000 nits/sq.m
Viewing angle	160° (80°/80°)H / 80° (40°/40°)V
Best viewing distance	>5M
Display colors	>16.7M
Operating system	Hikvision DSD42B02N Full Color LED Controller with VNNOX platform
IP rating (front/rear)	IP67(F) IP66(R)
Operating environment	Temperature -20°C ~ +60°C, Humidity: 10% ~ 95% (non-condensing)
Video input (with video processor)	HDMI
Compliant standard	CE-EMC, CE-LVE, CB-LVD, RoHS



trotter.eu

CASSETTE;

Dimensions;

Type	A
Height	2572 mm
Width	3622 mm
Depth	450 mm
Weight	450 kg



Outside;

Material : Cold-rolled steel plate 0.70 mm

Corrosion Protection: Galvanized

Colour : RAL 7001 (Outerside)

Inside;

Material : STEEL TO BE S235J2 OR EQUIVALENT

Corrosion Protection: Galvanized

Colour : inapplicable

MAST;

Dimensions;

Type	A
Height	2630 mm
Width	450 mm
Depth	246 mm
Weight	130 kg



Outside;

Material : Cold-rolled steel 0,70mm

Corrosion Protection: Galvanized

Colour : RAL 7016 (Outerside)

Inside;

Material : STEEL TO BE S235J2 OR EQUIVALENT

Corrosion Protection: Galvanized

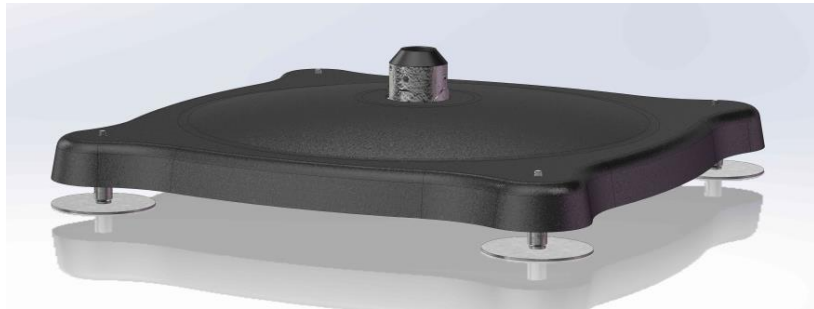
Colour : inapplicable



Foot;

Afmetingen;

Type	A
Total height	450 mm
Length / Width	2205 mm
Depth	246 mm
Weight	2000 kg



Outside;

Material : LLDPE

Colour : RAL 7021 (Outside)

Inside;

Material : STEEL TO BE S235J2 OR EQUIVALENT

Corrosion Protection: Galvanized

Colour : inapplicable

Mass weight; (Concrete)

Strength class: LOS

Environmental class : 00

Cons.klasse F4

Recipe Description: Komo Attest: 1704-12-09113
CEM I 52,2R Lengerich
Cem III/B 42,5N LH/SR Dyckerhoff Neuss
Vliegas EFA Fuller MR ½ cat A
GRIND 4/16
VC 1550 con. 30%



trotter.eu